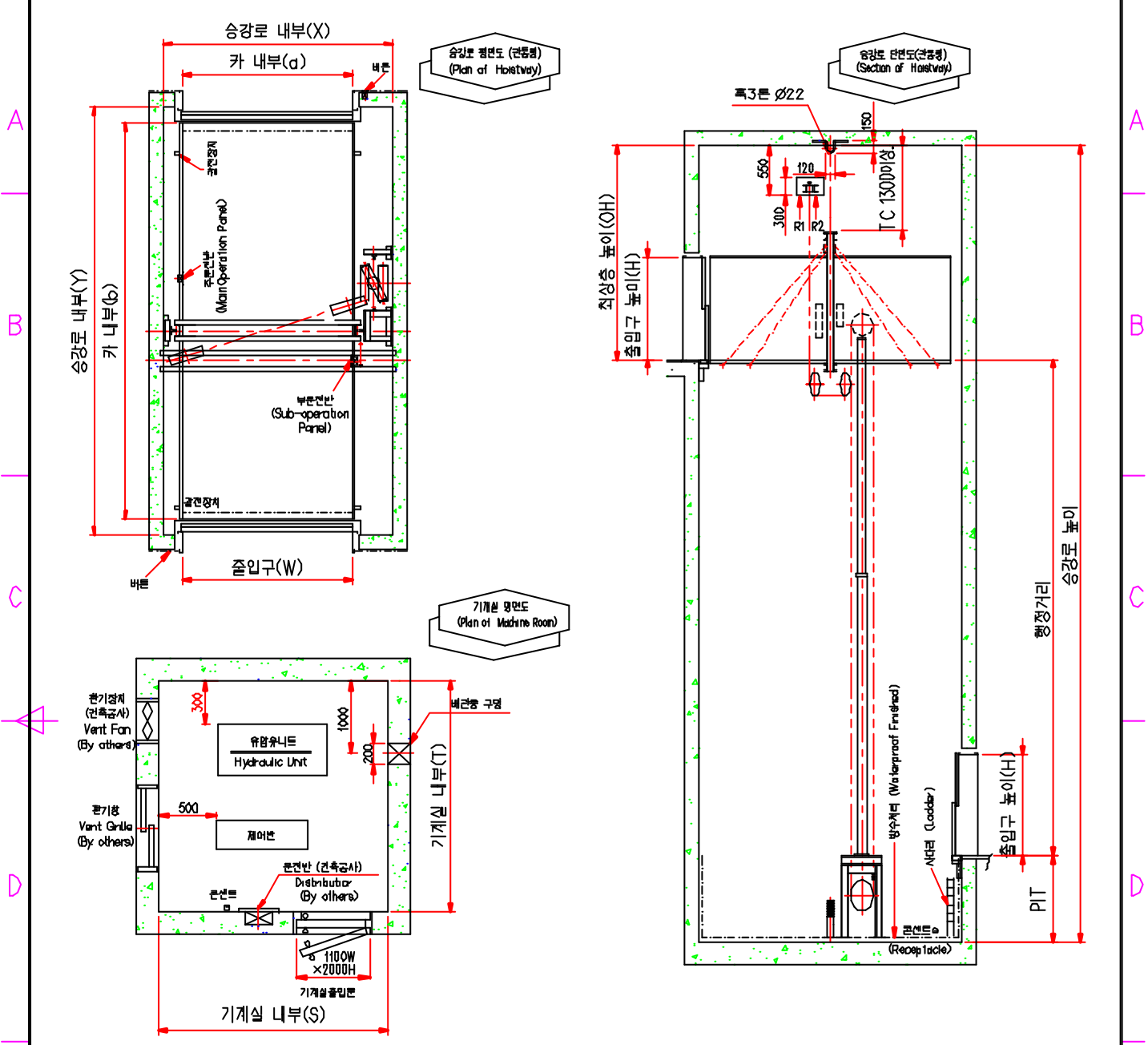


1000스기-3H 적용공차 ± 2mm	No	Name Part	규격 Dwg No	Mat'l	Q'ty	Set	Weight	Remarks
----------------------	----	-----------	-----------	-------	------	-----	--------	---------



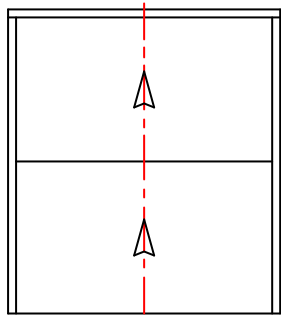
표준 규격표
Standard Dimensions of Car Elevator (Hydraulic Type)

NO	형식 (Elevator Type)	차종 (Car Type)	속도 (M/Min)	CAGE 규격	출입구 폭 (Entrance) (W × H)	승강로규격 (Hoistway) (W × H)	기계실규격 (Machine Room) (S × T)	최상층높이 (Over-head) (OH)	피트 (Pit)	기계실반력 (Machine Room Reaction) (kg)		MOTOR (KW)
				내부 (Internal) (a × b)						R1	R2	
1	KHEL-HC-2000	소형	20	2350 x 5400	2350 x 1800	3300 x 5850	2500 x 7000	3600	1500	4,700	3,000	19
2	KHEL-HC-2500	중형	20	2750 x 6350	2750 x 2100	3700 x 6800		3600	1500	5,700	3,000	24

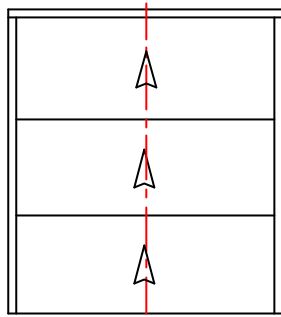
- 상기 표준 규격은 유압식 TYPE 기준이며, 로프식은 별도 문의 하여 주시기바랍니다
- 카 판넬 & 출입구 지점 소부도장 16T(몰선-ST5 H/L 15T)

Rev No	Drawn By	Appd By	3rd Angle Projection	Project	Title
Date	Desnd By	Chkd By	Unit	STANDARD	자동차승 규격표
Rev'd By	Byoungkwan Cho		Scale	Part	Project No
Chkd By	(주)금호엘리베이터		N/S	LAY OUT & 지수표	HC-LY001
Contents	KUMHO ELEVATOR CO., LTD.		Date	2008	File Name
					HC-LY001

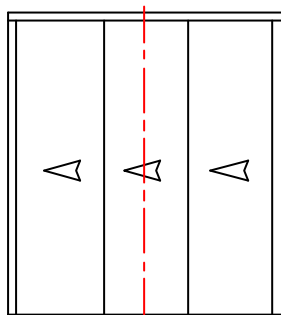
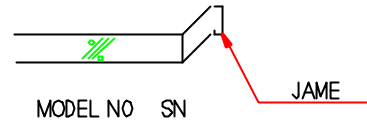
1	2	3	4
EXD00AT-3N03	적용공차 ± 2mm	No	Name Part
규격	Dwg No	Mat'l	Q'ty Set Weight
Remarks			



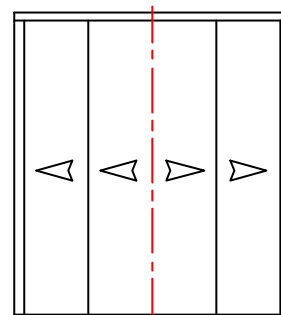
MODEL SN,SW (2U)



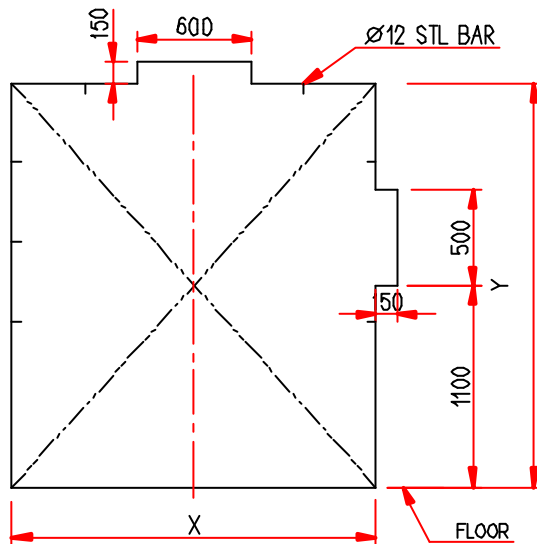
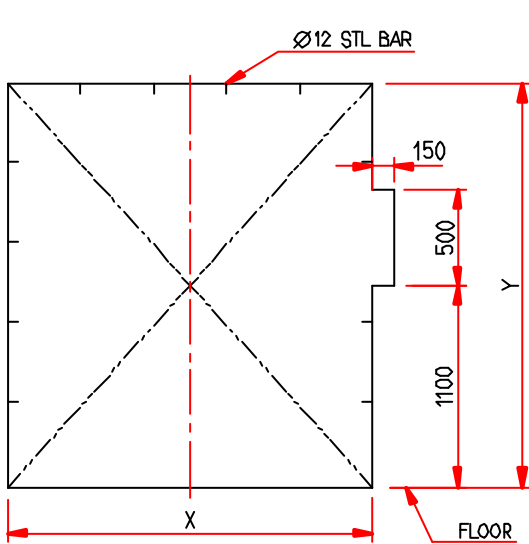
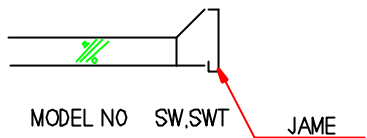
MODEL SN,SW (3U)



MODEL SN,SW (3S)



MODEL SN,SW (4C)



구조치수	MODEL	SN/SW	TW	SWT
X		OPW + 200	OPW + 300	OPW + 200
Y		OPH + 100	OPH + 100	OPH + 400

OPW : 출입구폭
OPH : 출입구높이

Rev No	Drawn By	Appd By	3rd Angle Projection	Project	Title
Date	Byoungmoon Cho	Chkd By	Unit	STANDARD	엘리베이터
Rev'd By	Byoungmoon Cho		mm/inch		건축공조도면
Chkd By			Scale	N/S	
Contents			Date	2008	Part
					LAY OUT & 치수표
					Project No
					EXE-CONC-LY003
					File Name
					CONC-LY0003